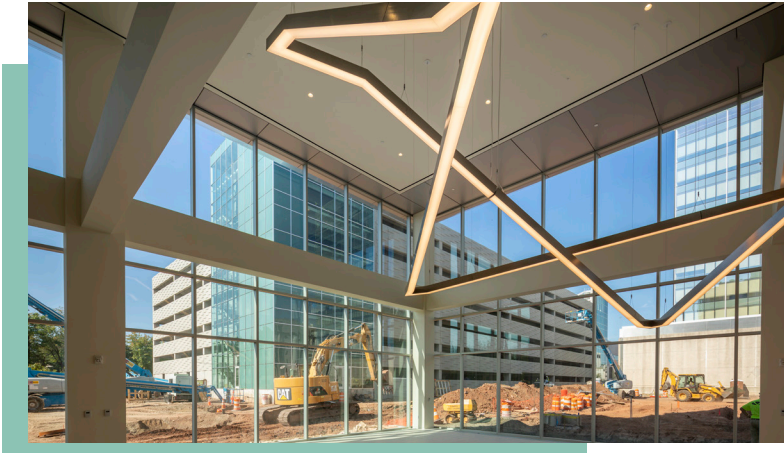




# ON3 WELCOMES RALPH LAUREN

THE ICONIC  
AMERICAN LIFESTYLE  
BRAND MOVED ITS NJ  
HEADQUARTERS  
TO 100 METRO BLVD



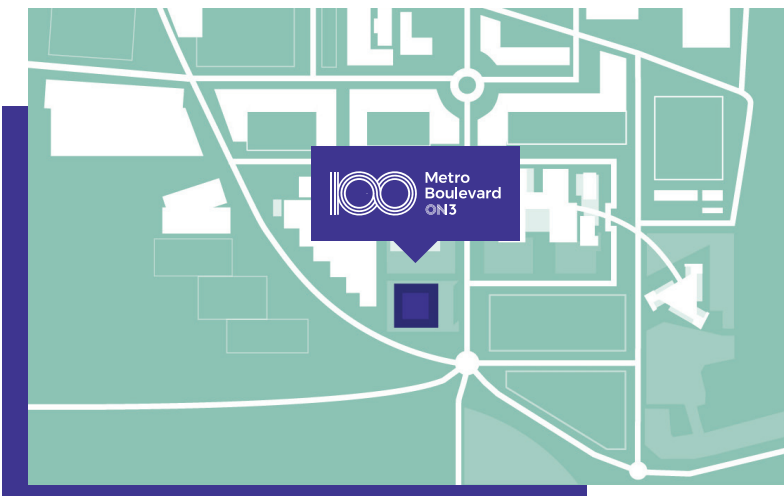
1,200 Ralph Lauren employees  
will join the thriving 116-acre  
world-class ON3 campus

The building has a newly  
redesigned entryway and lobby  
featuring 30-foot ceilings

A brand-new 2,500-spot  
structured parking deck serves  
100 & 200 Metro Blvd

Conveniently located on Rt3 in  
Nutley/Clifton, New Jersey, 9.5  
miles from New York City



Efficient flexible 20K SF full  
floors, up to 297K SF of Class A  
office space divisible to fit your  
needs available next door at  
200 Metro Blvd



ROBERT RUDIN  
+1 201-508-5228  
robert.rudin@cushwake.com

JOSHUA COHEN  
+1 973-292-4618  
josh.cohen@cushwake.com

BILL BROWN  
+1 973-292-4613  
bill.brown@cushwake.com

 follow us @on3nj  
 officeon3nj.com